

Mission briefing chart



F/A-18C TRAINING NIGHT

GENERAL INFORMATION								
CALLSIGN	DODGE 1		MISSION NUMBER		00-01NT_SP_MavT_FA18C			
WEATHER	20°C; QNH 787 / 31.00; QFE 703.78 / 27.71; BASE 2500; Clear							
AIRFIELD		A/B	TWR	ELEV,m	RWY	TIME		
	DEP	Nellis AFB	327.000	561	03R	17:15		
	ARR	Nellis AFB	327.000	561	21L	19:35		
	ALTN	Creech AFB	360.600	952	08	17:45		
FLIGHT		PILOT	A/C	LOADOUT		Task	FULE	
	Leader	DODGE 1	F/A-18C	View load chart!		Training	100%	
	WM1	-	-			-	-	
	WM2	-	-			-	-	
	WM3	-	-			-	-	
PACKAGE		N/A	A/C	VHF	UHF	D-Link	TASK	
	-		-	-	-	-	-	
	-		-	-	-	-	-	
	-		-	-	-	-	-	
	-		-	-	-	-	-	
WP	COORDINATE			NAME	ACTION	TIME	DIR	ELEV ft
0	Nellis AFB C01			ParkPos	GoIn	17:00	-	1843
1	Nellis AFB RWY 03R			RWY	Line-Up	17:15	03	1841
2				TakeOFF	TP	17:18	03	10000
3				WP3	TP	17:23	256	15000
4	Training begin		L O O P	EntryPoint	Electric ON	17:26	3	15000
5				ObsPoint	Scann	17:27	30	15000
6				IP	Weapon GO	17:28	339	15000
7	Fetch new ammunition!			Return	TP	-	216	10000
8	Creech AFB			Approach	TP	-	266	8000
9	Creech AFB RWY 08			RWY	TP	-	90	-
10	Nues training goes to WP5			TakeOFF	TP	-	90	10000
11				WP4	TP	-	131	15000
12	Nellis AFB			Approach	TP	-	84	8000
13	Nellis AFB RWY 21R			RWY	TP	-	220	-
14								
FENCE	IN	OUT	FUEL	JOKER	BINGO	TOTAL	PLAYTIME	
	4	7		2500	2000	10820	02:00	

TACTICAL INFORMATION

MISSION NUMBER 03-05NT_SP_MavT_FA18C

TASK Maverick Training

DESCRIPTION

Text / Picture

1. Switching on electrical equipment for ATFLIR and Maverick. WP 3
2. Search and scan for targets, Entry and Ops Point.
3. Primary goals first!
4. Destroy the primary target!
5. Search for secondary target!
6. Destroy the secondary target!
7. Select special destinations!
8. Destroy the special target!
9. Fly to Creech Airfield to re-arm!
10. After reloading, take off and fly to Entry Point.
11. At Entry Point you will receive a radio message, then you can unlock the next zone via the radio menu!

Requirement:

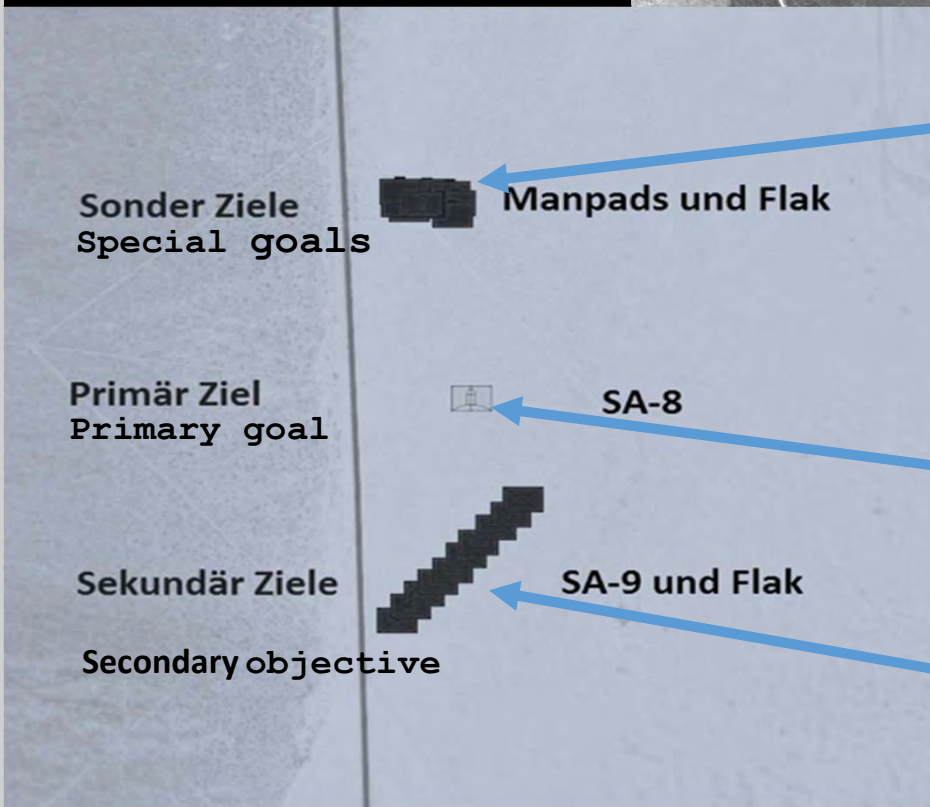
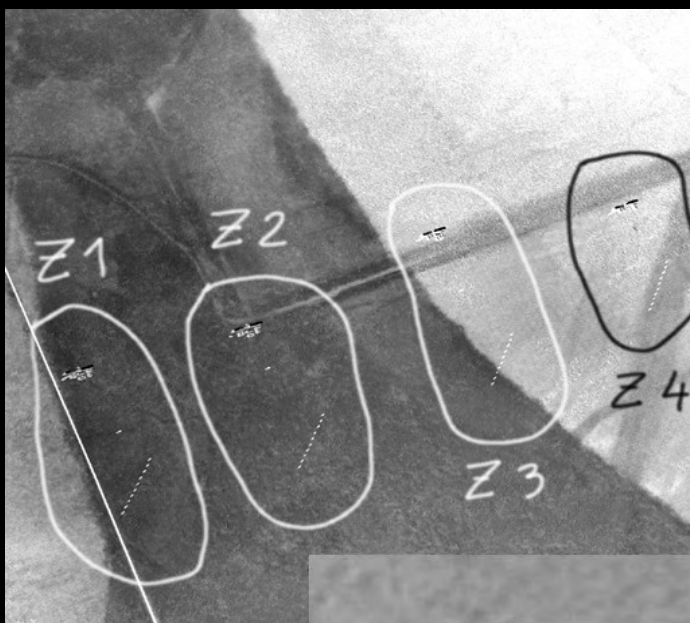
You have completed the previous zone!

12. Repeat the training until all zones are closed!
13. You can carry out an aerial refueling at any time!
14. After completing the training, you will fly back to Base Nellis!

Can't find the zone?

You can request smoke for the zone via the radio menu F10.

You can contact JTAC!



F / A - 1 8 C

LOAD INFORMATION

MISSION NUMBER

0 0 - 0 5 N T _ S P _ M a v T _ F A 1 8 C

NUMB

1 2

PARK P O

C O

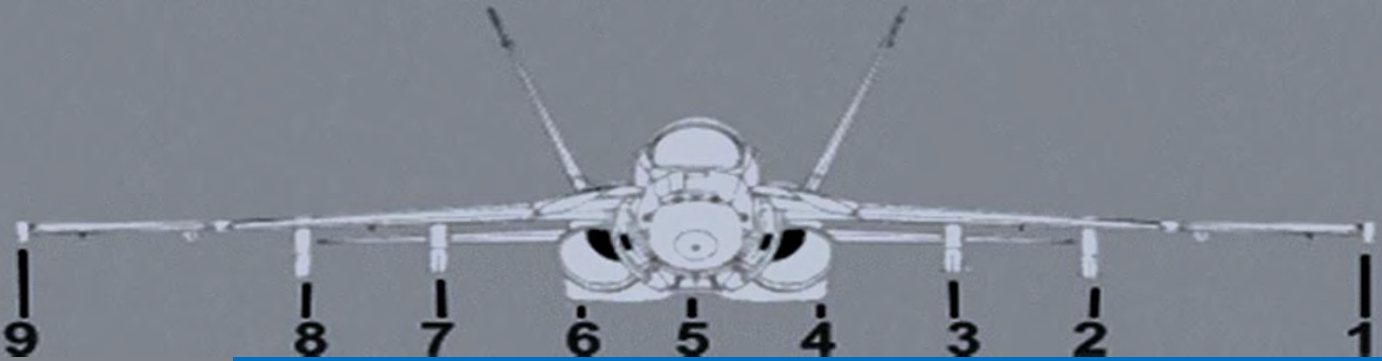
F U

2 0

REFU LI

L O A

Y E



1

AN/ ASQ- T 5 0



2

AGM- 6 5 F



3

AGM- 6 5 F



4

AN/ ASQ- 2 2 8



5

X

6

X

7

AGM- 6 5 F



8

AGM- 6 5 F



9

AIM- 9 M



AGM-
IF

T NT

1 3 6 k g

Kg

3 0 6

Length

2 , 4 9 m

Di a m e t e r

0 , 3 0 5 m

Range

2 5 K m e f f e k t i v

In f r a r e d

ONLY IN ZONE 3



AGM-
La s e r

T NT

1 3 6 k g

Kg

2 9 3

Length

2 , 4 9 m

Di a m e t e r

0 , 3 0 5 m

Range

2 0 K m

La s e r

RADIO | TACAN | ILS | INFORMATION

RADIO	COMM 1 and COMM 2		CHANNEL	WHAT	Mod
	251.000		1	Air Command	AM
	327.000		2	Nellis AFB	AM
	270.100		3	Nellis AFB ATIS	AM
	360.600		4	Creech AFB	AM
	290.450		5	Creech AFB ATIS	AM
	252.000		6	Tanker group 1	AM
	130.000		7	ADF JTAC group pos	AM
	132.000		8	ADF Air Command pos	AM
	150.000		9	EWR-NEVADA (Pinpoint)	FM
	136.000		10	JTAC 1 Axeman Zone 1	FM
	137.000		11	JTAC 2 Darknight Zone 2	FM
	138.000		12	JTAC 3 Warrior Zone 3	FM
	139.000		13	JTAC 4 Hammer Zone 4	FM
	45.000		14	Group channel	FM

TACAN	TACAN	WHAT	CODE	RADIO	CALLSIGN	TYP
	X 87	Creech AFB	INS	360.6		
	X 12	Nellis AFB	LSV	327		
	Y 1	Tanker 1 group 1		252	Texaco	KC-130
	Y 10	Tanker 2 group 1		252	Arcor	S-3B
	Y 11	Tanker 3 group 1		252	Shell	KC-135 MPRS

ILS	ILS	WHAT	CODE

AIRPORT INFORMATION

NAME	Nellis AFB			MAP	Nevada	
TOWER	327.000	132.550	38.700			
TACAN	X 12	ADF	-			
		RWY				
ILS	109.10	21R				
						TAKE-OFF
						03R
						Landing
						21R

Park

Position

View load chart

TAXI TO

03R

VIA

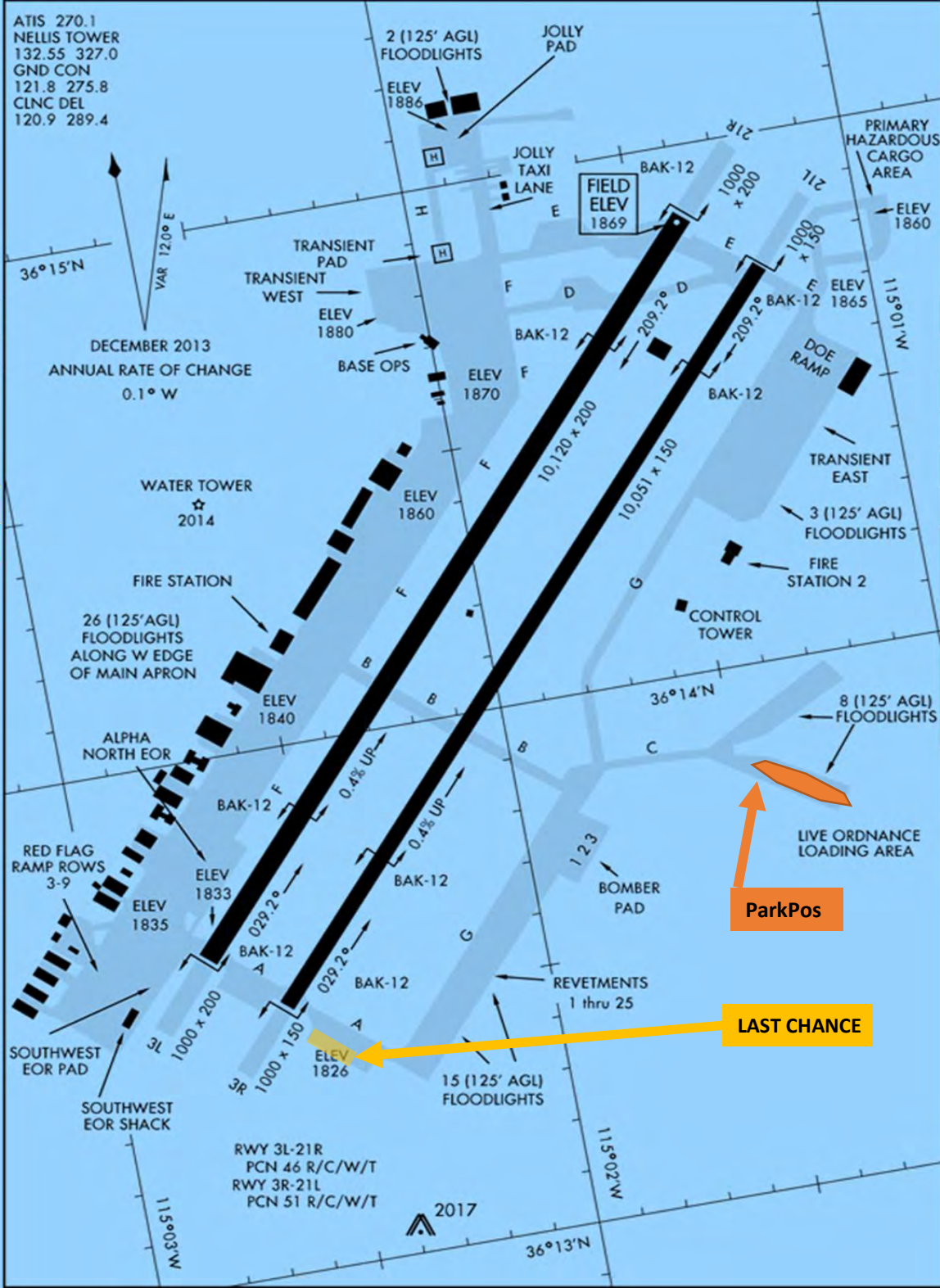
C

G

A

LAST CHANCE

TAKE-OFF



TAXI FROM
21R
VIA
B
CROSSING
03R
VIA
B
C
OR
A
G
C

ParkPos

LAST CHANCE

AIRPORT INFORMATION

NAME	Creech AFB			MAP	Nevada	
TOWER	360.600	118.300	38.550			
TACAN	X 87	ADF	-			
		RWY				TAKE-OFF
ILS	108.70	08				08
Park						Landing
Position						08

TAXI TO
08
VIA
F
C
B

LAST CHANCE
TAKE-OFF

TAXI FROM
08
VIA
F
B

